

# How to upload custom indicator?



1) Start creating EA

3) Click "browse" and find indicator (\*.mq4 file) on your computer and double-click it

5) Parameters and modes will be automatically read from the indicator file and default values shown on the screen. You do not need to edit them at this time – you will be able to set different parameters when you create a new signal (step7).

Indicator name: ADXCrosses

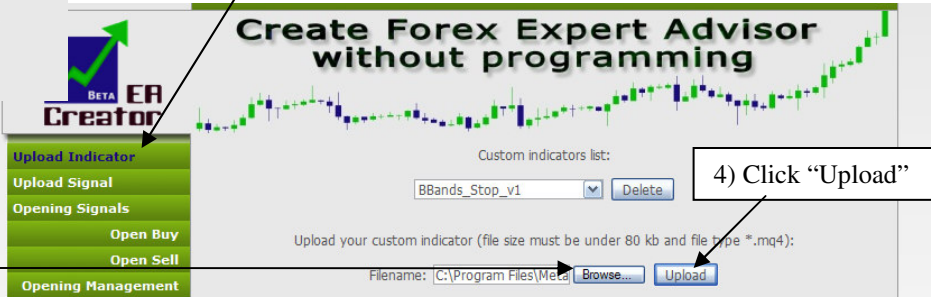
Parameter name	Default parameter value
adxcrossesperiod	14

Number of indicator modes (output line/value): 2  
 Number of visible indicator modes: 2

Mode value	Mode name (color)
0	extmapbuffer1 (color: blue)
1	extmapbuffer2 (color: red)

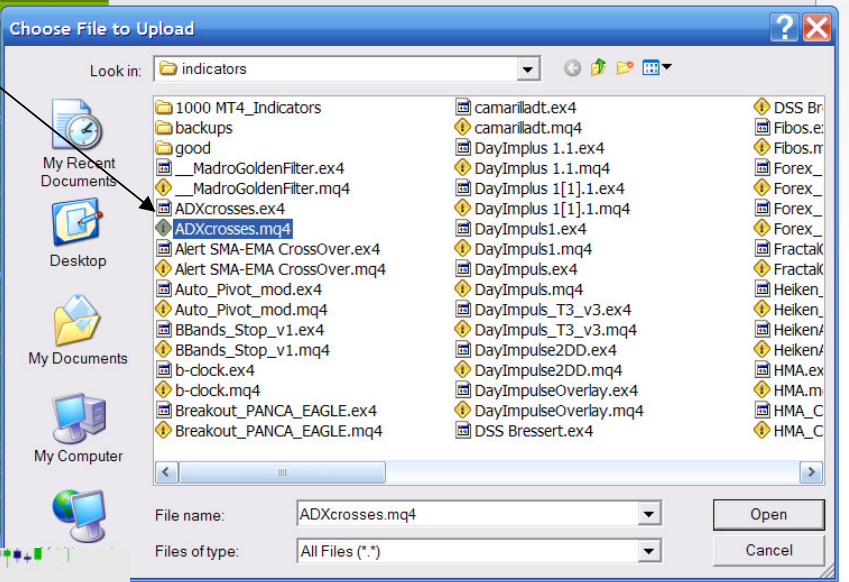
Custom indicators list: ADXCrosses [Delete]

Upload your custom indicator (file size must be under 80 kb and file type \*.mq4):  
 Filename: [Browse] [Upload]



2) Go to menu "Upload indicator"

4) Click "Upload"



6) Click "Ok" and you will be able to see this indicator in the list (below the standard indicators) while creating a new "indicator signal"

All Signals for Opening Long Positions

Create signals for opening buy order. Combination of all signals on this page gives one main signal to buy (open long position). When you create new signal, it appears in the list below.

MACD  
 MFI  
 Momentum  
 OBV  
 OsMA  
 RSI  
 RVI  
 SAR  
 StdDev  
 Stochastic  
 WPR  
 ADXCrosses  
 BBands\_Stop\_v1  
 BrainTrend2Sig  
 Demark\_trend\_new  
 EMA Crossover Signal  
 FractalChannel\_v1  
 Heiken\_Ashi\_Smoothed\_1  
 Ind-TD-Demark-3-1\_eng  
 Mouteki  
 Schaff Trend Cycle  
 Slope Direction Line  
 Slope\_Direction\_Line  
 TD\_Sequential  
 TD\_Sequential\_v2  
 ZigZag  
 adx(1),lucdi  
 IntradayFibonacci  
 SuperTRX\_v1  
 superTrend

Click on the indicator name to add it to the list. Click on the indicator name to edit its parameters.

Indicator [?] ADXCrosses (custom)  
 Price [?] Ask  
 Candle [?] Candle High  
 Numeric value [?]

Select Comparison mark [?]  
 Right side. Select indicator or price/candle. You will be able to set additional parameters after you click "Continue"

Indicator [?] AC  
 Price [?] Ask  
 Candle [?] Candle High  
 Numeric value [?]

Continue

Note: You need to upload EA only one time. After first upload you will be able to use it later in any EA.

7) When indicator is successfully uploaded you can use it in any signals like a standard indicator.

You can use it in Opening (entry), Closing (exit) signals for buy and sell orders. You can use it for dynamic stop loss and dynamic take profit or automatically starting and stopping EA.

You can set parameters and which indicator lines (modes) should be used while creating a signal. You can find signal creation examples with screens (like this one) at [www.eacreator.com](http://www.eacreator.com)